

Changeover ball valve, 3-way, External thread

- For open and closed cold and warm water systems
- Suitable for potable water



Type overview

Tyyppi	DN	G ["]	kvs [m ³ /h]	PN
EXT-R5B20-I001	20	1	9.6	32
EXT-R5B25-I001	25	1 1/4	11.3	32
EXT-R5B32-I001	32	1 1/2	25	32

Technical data

Functional data	Fluid	Cold and hot water, potable water, water with glycol up to max. 50% vol.
	Fluid temperature	2...110°C
	Fluid temperature note	lower and higher temperatures on request
	Differential pressure Δp_{max}	600 kPa
	Differential pressure note	200 kPa for low-noise operation
	Leakage rate	Leckrate B (EN 12266-1)
	Angle of rotation	90°
	Pipe connection	External thread according to ISO 228-1
	Installation position	upright to horizontal (in relation to the stem)
	Servicing	maintenance-free
Materials	Housing	Messinkirunko
	Closing element	Chrome-plated brass (CW617N)
	Stem	Messinki
	Stem end	pronssi CW 614 N
	Stem seal	EPDM O-ring
	Stem bearing	PTFE
	Seat	PTFE, O-rengas EPDM

Safety notes



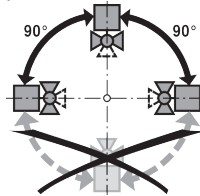
- The valve has been designed for use in stationary heating, ventilation and air-conditioning systems and must not be used outside the specified field of application, especially in aircraft or in any other airborne means of transport.
- Only authorised specialists may carry out installation. All applicable legal or institutional installation regulations must be complied during installation.
- The valve does not contain any parts that can be replaced or repaired by the user.
- The valve may not be disposed of as household refuse. All locally valid regulations and requirements must be observed.
- When determining the flow rate characteristic of controlled devices, the recognised directives must be observed.

Product features

Mode of operation The change-over ball valve is adjusted by a rotary actuator. The rotary actuator is connected by an open/close signal.

Installation notes

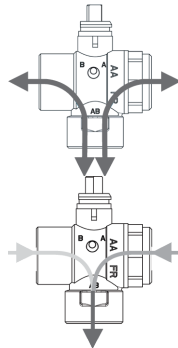
Recommended installation positions The ball valve can be installed upright to horizontal. The ball valve may not be installed in a hanging position, i.e. with the stem pointing downwards.



Water quality requirements The water quality requirements specified in VDI 2035 must be adhered to. Belimo valves are regulating devices. For the valves to function correctly in the long term, they must be kept free from particle debris (e.g. welding beads during installation work). The installation of a suitable strainer is recommended.

Servicing Ball valves and rotary actuators are maintenance-free. Before any service work on the final controlling device is carried out, it is essential to isolate the rotary actuator from the power supply (by unplugging the electrical cable if necessary). Any pumps in the part of the piping system concerned must also be switched off and the appropriate slide valves closed (allow all components to cool down first if necessary and always reduce the system pressure to ambient pressure level). The system must not be returned to service until the ball valve and the rotary actuator have been correctly reassembled in accordance with the instructions and the pipeline has been refilled by professionally trained personnel.

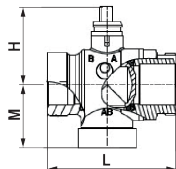
Flow direction Direction of flow in both directions possible.



Motorising EXT-LX90-F001
EXT-LX90-F005

Dimensions

Dimensional drawings



The actuator dimensions can be found on the respective actuator data sheet.

Type	DN	Rp ["]	L [mm]	M [mm]	H [mm]	kg
EXT-R5B20-I001	20	1	72	40	47	0.37
EXT-R5B25-I001	25	1 1/4	85	43	51	0.55
EXT-R5B32-I001	32	1 1/2	90	52	58	0.86

- Data sheets for actuators